

### TUESDAY

15:10-15:35

**Alp's World Junior**  
15:10-15:35

**Fast Track Phonics A**  
15:10-15:35



15:50-16:15

**On Track Reading**  
15:50-16:15

16:45-17:10

**New** **Book Club: Magic Treehouse: Dolphins at Daybreak** 16:45-17:10

**Science Circle**  
16:45-17:10

17:15-17:40

**★ Nature's Notebook**  
17:15-17:40

**Magical Mysteries**  
17:15-17:40

17:45-18:10

**Big Think**  
17:45-18:10

18:15-18:40

**New** **Alp in Space: A Journey through the Solar System**  
18:15-18:40

18:50-19:15

**Quiz Night**  
18:50-19:15

**Story Time A**  
18:50-19:15

19:20-19:45

### THURSDAY

15:10-15:35

**On Track Writing**  
15:10-15:35

15:50-16:15

**Alp's World Junior**  
15:50-16:15

**Fast Track Phonics B**  
15:50-16:15

16:45-17:10

**New** **Book Club: Magic Treehouse: Dolphins at Daybreak** 16:45-17:10

**★ Connect the Dots**  
16:45-17:10

**Quiz Night**  
16:45-17:10

17:15-17:40

**★ Art in Color**  
17:15-17:40

**Magical Mysteries**  
17:15-17:40

17:45-18:10

**On Track Reading**  
17:45-18:10

**Science Circle**  
17:45-18:10

18:15-18:40

**Fast Track Phonics A**  
18:15-18:40

**★ Nature's Notebook**  
18:15-18:40

18:50-19:15

**Big Think**  
18:50-19:15

**Story Time B**  
18:50-19:15

19:20-19:45

### WEDNESDAY

**On Track Reading**  
15:10-15:35

**Alp's World Junior**  
15:50-16:15



**Fast Track Phonics A**  
15:50-16:15



**★ Art in Color**  
16:45-17:10

**Big Think**  
16:45-17:10

**★ Connect the Dots**  
17:15-17:40

**Quiz Night**  
17:45-18:10



**Story Time B**  
18:15-18:40

**Magical Mysteries**  
18:50-19:15

**Story Time A**  
18:50-19:15

**★ Nature's Notebook**  
19:20-19:45

**New** **Alp in Space: A Journey through the Solar System** 19:20-19:45



This is a brand new class this month. Why not give it a try?



A new theme for this class this month.



A reopened class with all new content.

#### Class Descriptions



English



Japanese

- Story Time will host two unique stories per week.
- Fast Track Phonics' 12 lessons will continue to be split into A and B schedules. In August, A classes will cover lessons 9, 10, 11, and 12; B classes will cover lessons 3, 4, 5, and 6. Students can join all sessions.



Please refer to the daily schedule in KA Connect to see the courses with printable materials.



KA Plus!

# KA Plus! Grade 1

# KA Weeks 21 - 24 (7/30 - 8/26)

## FRIDAY

15:10-15:35

**Fast Track Phonics B**  
15:10-15:35

15:50-16:15

**On Track Writing**  
15:50-16:15

16:45-17:10

17:15-17:40

17:45-18:10

**Big Think**  
17:45-18:10

18:15-18:40

**Story Time A**  
18:15-18:40

18:50-19:15

**Story Time B**  
18:50-19:15

19:20-19:45



**New** **Alp in Space: A Journey through the Solar System** 15:10-15:35



## MONDAY

15:10-15:35

15:50-16:15

16:45-17:10

17:15-17:40

17:45-18:10

18:15-18:40

18:50-19:15

**On Track Reading**  
18:50-19:15

19:20-19:45

**On Track Writing**  
19:20-19:45



**Story Time B**  
18:50-19:15

**Story Time A**  
19:20-19:45



## SATURDAY

13:10-13:35

**Magical Mysteries**  
13:10-13:35

13:40-14:05

**New** **Nature's Notebook**  
13:40-14:05

14:10-14:35

**Science Circle**  
14:10-14:35

14:40-15:05

**Alp's World Junior**  
14:40-15:05



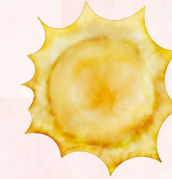
### Class Descriptions



English



Japanese



This is a brand new class this month. Why not give it a try?



A new theme for this class this month.



A reopened class with all new content.



- Story Time will host two unique stories per week.
- Fast Track Phonics' 12 lessons will continue to be split into **A** and **B** schedules. In August, **A** classes will cover **lessons 9, 10, 11, and 12**; **B** classes will cover **lessons 3, 4, 5, and 6**. Students can join all sessions.



Please refer to **the daily schedule in KA Connect** to see the courses with printable materials.



KA Plus!